



# Pegasus Farm

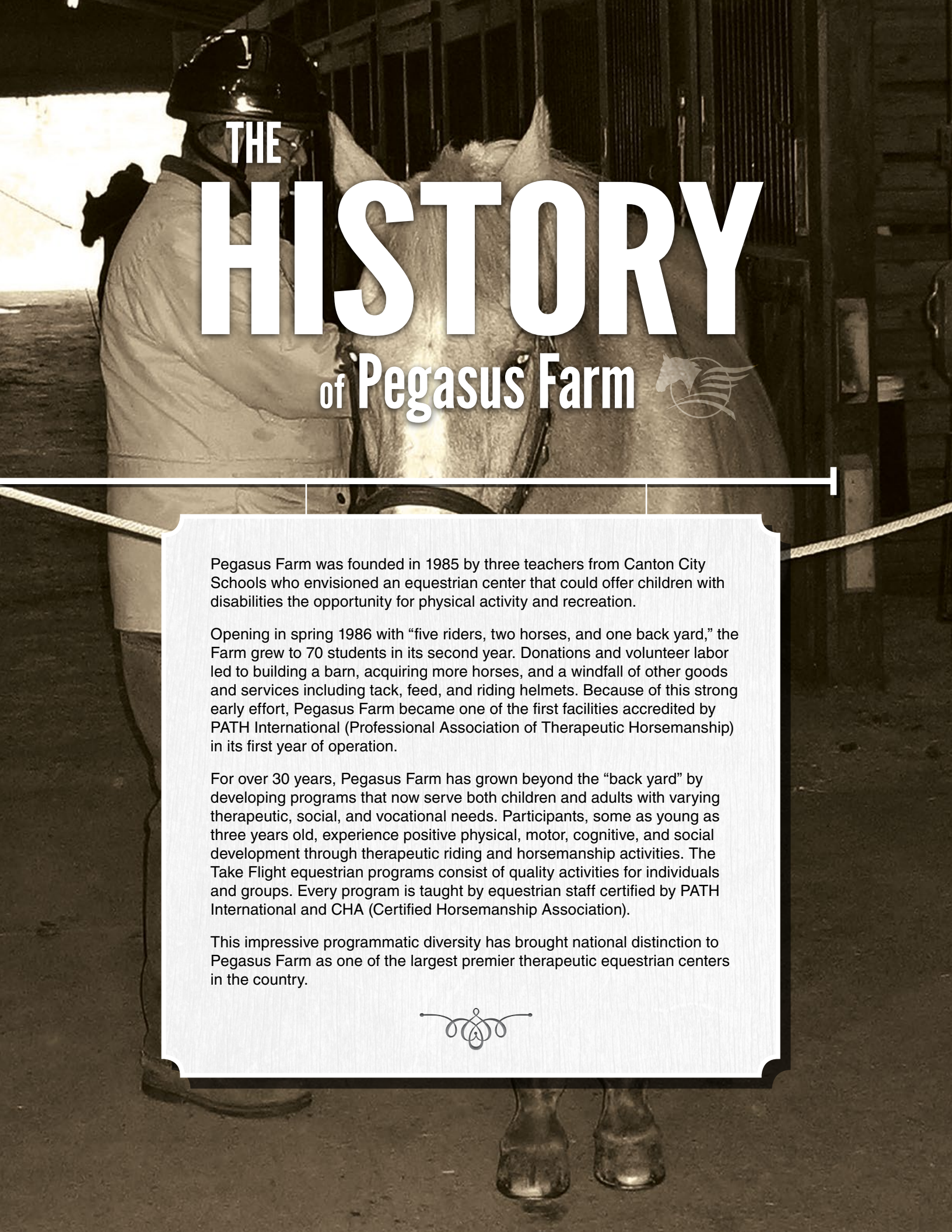
— | Since 1986 | —




# MISSION STATEMENT



The mission of Pegasus Farm is to create a community that holistically supports and empowers people with diverse needs through therapeutic equestrian programs, vocational services, and recreational and social activities.



# THE HISTORY of Pegasus Farm



Pegasus Farm was founded in 1985 by three teachers from Canton City Schools who envisioned an equestrian center that could offer children with disabilities the opportunity for physical activity and recreation.

Opening in spring 1986 with “five riders, two horses, and one back yard,” the Farm grew to 70 students in its second year. Donations and volunteer labor led to building a barn, acquiring more horses, and a windfall of other goods and services including tack, feed, and riding helmets. Because of this strong early effort, Pegasus Farm became one of the first facilities accredited by PATH International (Professional Association of Therapeutic Horsemanship) in its first year of operation.

For over 30 years, Pegasus Farm has grown beyond the “back yard” by developing programs that now serve both children and adults with varying therapeutic, social, and vocational needs. Participants, some as young as three years old, experience positive physical, motor, cognitive, and social development through therapeutic riding and horsemanship activities. The Take Flight equestrian programs consist of quality activities for individuals and groups. Every program is taught by equestrian staff certified by PATH International and CHA (Certified Horsemanship Association).

This impressive programmatic diversity has brought national distinction to Pegasus Farm as one of the largest premier therapeutic equestrian centers in the country.



# PROGRAMS & SERVICES



## Take Flight Therapeutic Equestrian Programs

Since 1986, Pegasus Farm has provided equestrian activities, including therapeutic horseback riding and horsemanship, to improve the physical, motor, cognitive, and social development of children and adults with diverse needs.



The Take Flight equestrian programs focus on individual and group needs and are taught by equestrian staff certified by PATH International (Professional Association of Therapeutic Horsemanship) and CHA (Certified Horsemanship Association).

### The Benefits of Therapeutic Riding

A wealth of research shows participation in equine-assisted activities improves balance, muscle strength, spasticity, sensory integration, self-confidence, emotional control, self-discipline, and stress management.

### Summer Camps

We also offer equestrian and art summer camps for children of all abilities. These experiences allow us to reach out to the community at large. Equestrian camps feature horseback riding, carriage driving, and recreational vaulting. Art camps offer pottery, 3-D art, sculpture, ceramics, and painting.

### Horseback Riding

Horseback riding is the Farm's main focus. Each lesson includes horsemanship theory adapted to participant needs. Students are encouraged to become as independent as possible in their riding skills.



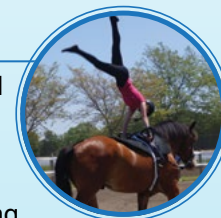
### Carriage Driving

Carriage driving is a great activity for those who are either unable to mount a horse or simply interested in a different equestrian discipline. The benefits of carriage driving are similar to riding.



### Recreational Vaulting

The Pegasus Vaulting Club was formed in 2000. It is a unified team of Take Flight participants and community youth. Vaulting requires working in harmony with the horse while developing coordination, balance, strength, and creativity. As ambassadors for the Farm, the vaulting team makes frequent community appearances.



### Individualized School Programs

Pegasus Farm staff is pleased to work with various school districts to design programs that support the interests of students with diverse needs.



### Partnership Programs

Partnerships with other professional organizations allow Pegasus staff to develop meaningful experiences for youth with behavioral challenges. Such programs help participants develop greater self-awareness, self-confidence, social connectedness, and personal insight.

# “Wings” Adult Day Services Program



The Wings Program provides real world employment experiences that prepare our participants for further community employment, leading to greater independence and inclusion.



## Pegasus Farm Country Store and Gardens



Located on Pegasus Farm, the Country Store and Gardens provides vocational training and employment for participants in the Wings Program. The store offers a variety of locally sourced products, bulk foods, direct trade coffees, fresh produce, flowers, gluten free products as well as gift items.

Wings staff are responsible for every aspect of this community-based retail operation including bulk food packaging, customer service, inventory, and stocking. Their efforts benefit the local community by providing a convenient food resource. All proceeds from sales are used to benefit those served by Pegasus Farm.



### Wellness Garden

The five-acre Wellness Garden provides naturally grown vegetables, fruits, and flowers, which are sold at the Country Store. Wings staff nurture the garden all year round, providing an excellent environment for community outreach and education. The garden is open to the community for self-guided walking tours as well as scheduled group tours, demonstrations, and learning sessions.

Both the Country Store and the Wellness Garden were built with the support of many local foundations, organizations, and donors.



# Military Family Center

Operated by Pegasus Farm

In 2017, Pegasus Farm partnered with Rotary Districts 6650, 3131, 3132 and Walsh University to develop a comprehensive, community-based Military Family Center (MFC) to meet the critical needs of veterans, active duty military, first responders, and their families.



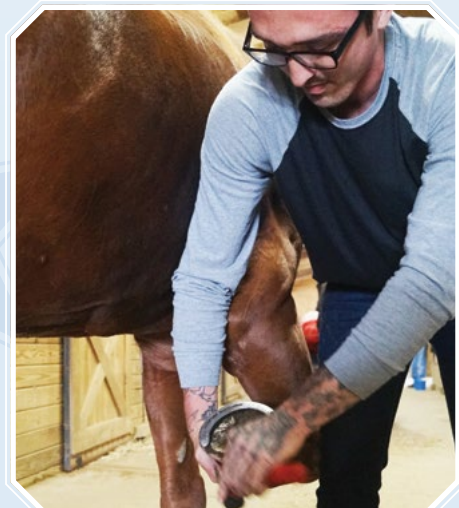
Through this collaboration, the MFC continues to grow and serve hundreds of individuals with various programs and services.

Pegasus Farm manages the project and provides the therapeutic equestrian component. Walsh University offers direct clinical services including occupational therapy, counseling, and exercise programs. Rotary supports the work through volunteer efforts and donations.

Pegasus Farm has been serving veterans with equestrian programming since 2007. These programs help them overcome the effects of post-traumatic stress, physical disabilities, traumatic brain injury, substance abuse, depression, and social isolation.



Results — In 2019, 516 individuals participated in equestrian activities at the MFC. Walsh University assisted 23 people with clinical services and 188 individuals enjoyed our family support activities.



The goal of the MFC is to offer an environment where veterans, first responders, and their families can connect and find the support and services they need to cope with life's challenges.



## Allison's Story

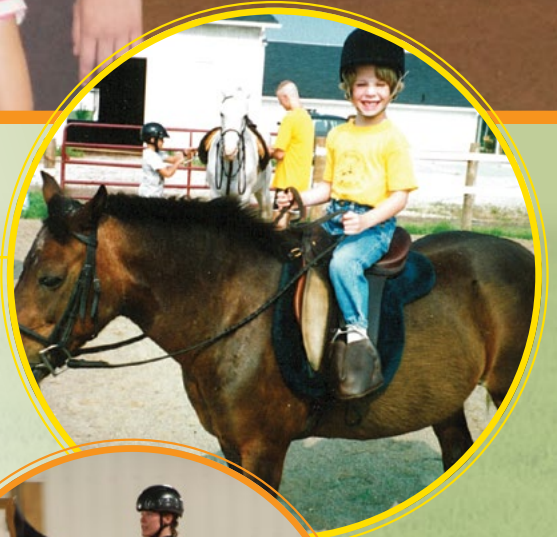
Allison was born eight weeks premature with hydrocephalus, a condition causing brain damage. As she grew, she experienced severe developmental delays. Her balance, eye-hand coordination, and fine motor skills were weak. Even with extensive therapy, her progress was slow.

Though she was intellectually capable, Allison struggled in school. She could not listen, write, and remember what was said. Socially, she had few friends because her weak social and verbal skills kept her from forming relationships. This was the case from elementary through high school.

But at Pegasus Farm, Allison was a different person. She was capable and confident. She was a regular kid who was becoming an accomplished rider. Riding and vaulting helped Allison learn to follow directions and remember a pattern.

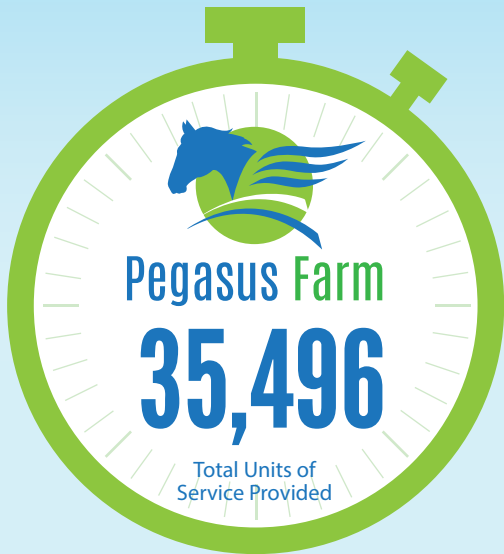
She began volunteering at Pegasus when she was a teenager. She took her responsibilities seriously and worked hard. Once again, Pegasus contributed to Allison's feelings of self-worth.

Thirty years old now, Allison is still involved at Pegasus as a mentor-level volunteer and vaulting coach. Pegasus is where she has friends and is valued, respected, and successful. Pegasus has helped Allison become the kind, compassionate woman she is today, and Pegasus will always be a part of her life.





# 2019 SERVICE & SUPPORT



Pegasus Farm offers three main programming areas, serving individuals age three through 83!

**2,434**

Units of Service Provided  
Military Family Center



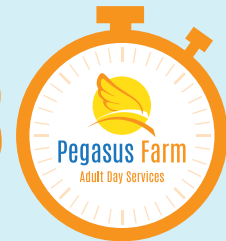
**9,541**

Units of Service Provided  
Take Flight



**21,933**

Hours of Service Provided  
Wings Adult Day Services



## Main Pegasus Farm Programs

Number of Individuals Served



**31**

Wings Adult Day Service Program

**393**

Take Flight Therapeutic Riding, Driving & Horsemanship Program

**1,105**

Military Family Center

## All Equestrian Activities & Camps

Number of Individuals Served

We partner with other community organizations to offer therapeutic riding, driving, and horsemanship lessons to military veterans and at-risk youth.

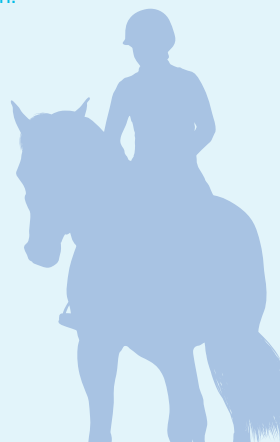
Take Flight — 148

Recreational Vaulting — 35

Camps & Other Programs — 89

Youth at Risk — 123

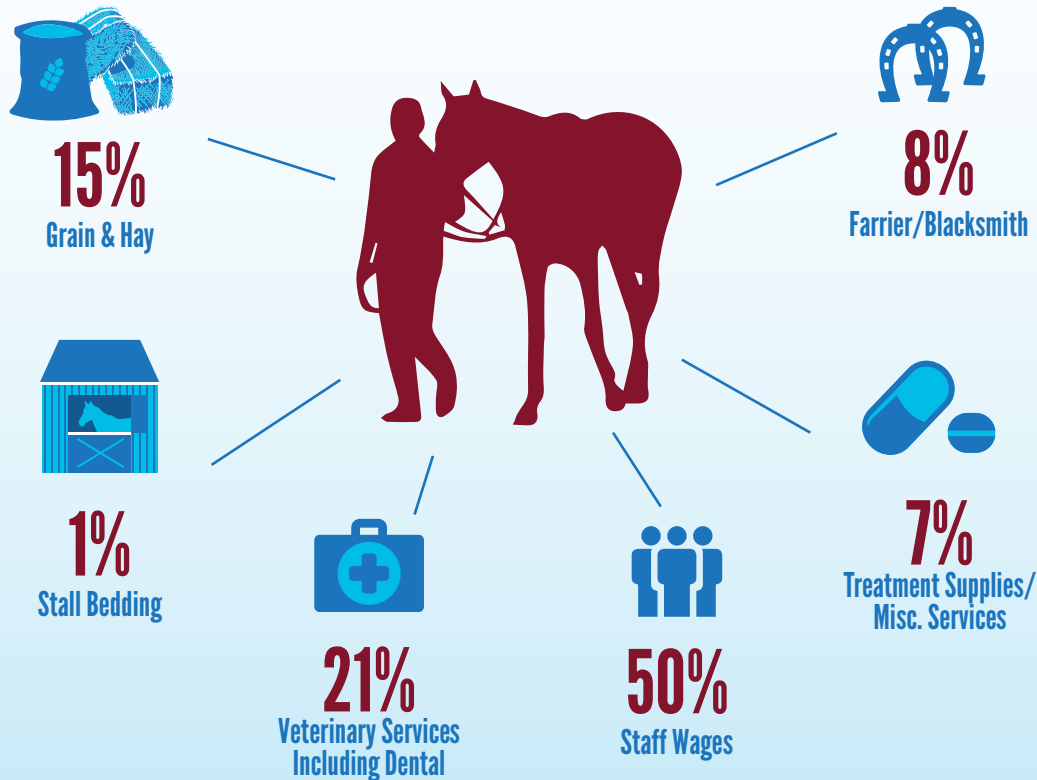
Military Family Center — 453





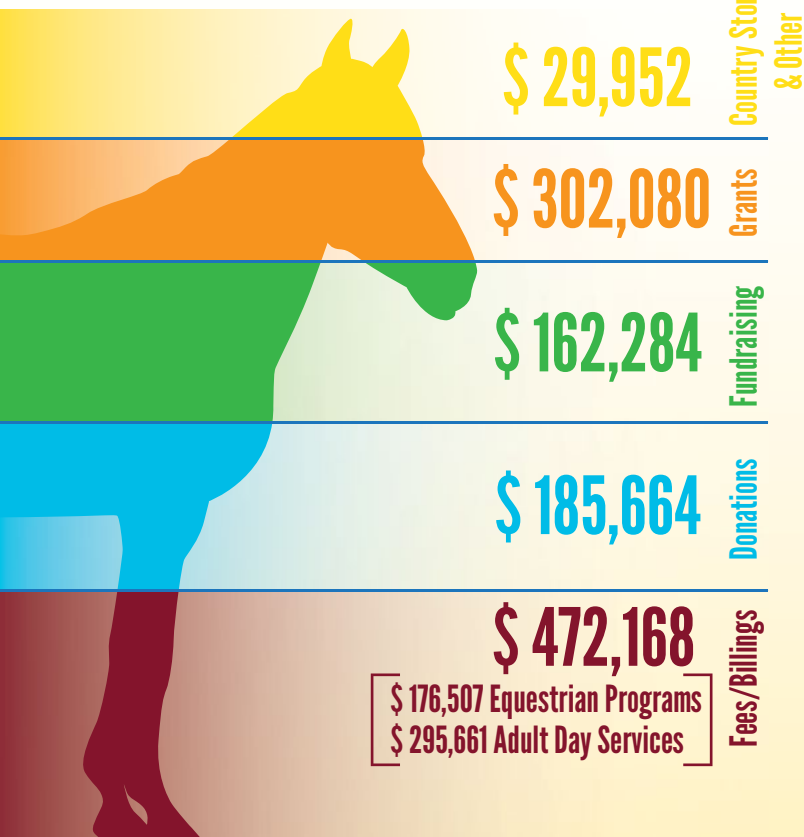
# What Goes In To Caring For a Horse?

In 2019, we had 37 horses that assisted us in providing over 13,000 hours of services to our riders. The annual cost of caring for one horse is approximately \$3,500.



## 2019 Sources of Funding

(Operating Resources)



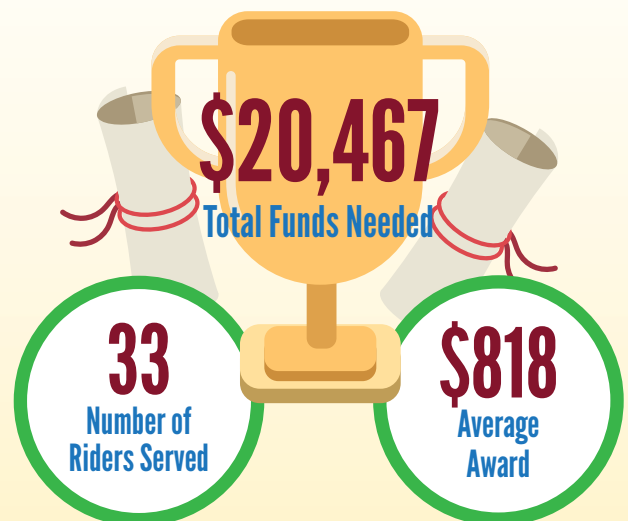
\$ 176,507 Equestrian Programs  
\$ 295,661 Adult Day Services




Pegasus Farm

## Cole Surmay Scholarship Fund

Our Cole Surmay Scholarship Fund helps those who need therapeutic riding lessons but may not be able to afford the cost.





# THE VISION

for

# PEGASUS FARM

The Pegasus Farm vision is the fulfillment of its mission to support people with physical, developmental, and intellectual disabilities, mental health and behavioral issues, and other similar needs. This requires careful stewardship of Farm resources and the continual development of strategic partnerships and collaborations. Future endeavors could include residential services, additional small business enterprises, and educational programming.

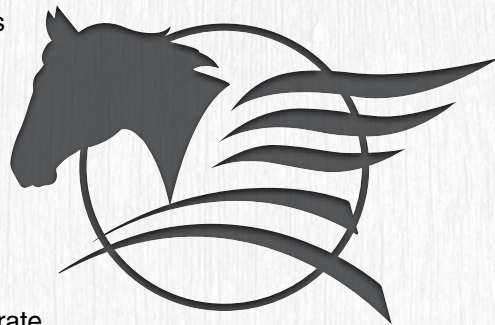


# BUILDING THE LEGACY

Pegasus Farm is grateful for support from individual, corporate, and foundation donors who have played a vital role in shaping the Farm's current success. As we look to the future, we believe our mission will continue to resonate with the personal and organizational values of current and new donors alike as we strive to serve those who need our help. If you wish to support the Pegasus Farm mission, you can choose from several opportunities:

## CORPORATE SPONSORSHIP

Corporate partners and sponsors enjoy opportunities to market their products and services to people who attend Pegasus Farm events, participate in programs, and otherwise support the mission. Sponsorship packages are available at several levels with marketing opportunities commensurate to the level of support. We can also customize sponsorship packages responsive to the marketing and philanthropic needs of our corporate partners. For more information on corporate sponsorship, please contact our Development Associate at (330) 935-2300 ext. 110.



**Individual Donations** - Individual donors may support the Farm's vision and mission in a number of ways including:

**Monthly Giving** - Through our web site or your banking institution, you may schedule a convenient, automatically processed monthly gift that fits your budget.

**Planned Giving** - When planning your estate, consult with your attorney or accountant on ways to remember and support future Pegasus Farm programming through a legacy gift.

# OPPORTUNITIES TO PARTNER WITH US

**Annual Fund Drive** - The Pegasus Farm Annual Fund Drive is a convenient way to make a one-time gift at the end of the tax year. Larger gifts to the Annual Fund Drive may be billed in installments to better suit your budget.

**Celebrations** - Celebrate an event or achievement by making a donation you know will serve a meaningful charitable purpose. Contact our office manager at (330) 935-2300 ext. 102 for more information on making a gift to commemorate a special occasion.

**Cole Surmay Scholarship Fund** - Some of our program participants struggle to afford the cost of therapeutic riding lessons because of extraordinary medical costs or other expenses related to the participant's disability. To eliminate such financial barriers, the Cole Surmay Memorial Scholarship Fund was established through the generosity of many donors.

Scholarships from this fund help cover participant lesson fees. Your donation of \$1,000 will provide a year's worth of financial assistance for lessons for a participant who could not otherwise afford the cost of the program.



**Memorials** - A memorial donation is a very special way to honor the memory of a loved one. Contact our office manager at (330) 935-2300 ext. 102 to learn more about memorials.

**In-Kind Giving** - Many local clubs, churches, and individuals give items found on the Pegasus Farm Wish List. Whether it's white vinegar to clean water buckets for our horses, gently used boots and tack, or paper towels, we appreciate all donations that help minimize operational costs.

**Horse Sponsorship** - Pegasus Farm maintains a herd of 35 specially trained horses year round. The average cost of caring for a horse is \$3,500 year. You can sponsor a horse at any level including one year, six months, one month, or an amount of your choosing. Your donation will keep your horse happy, healthy, and able to empower a person with a disability to grow toward greater independence.



# VOLUNTEERING

## AT PEGASUS FARM

Volunteers are the heart of Pegasus Farm, and we truly could not operate without the volunteer service of over 200 dedicated people donating over 13,000 hours annually. Our volunteers make it possible for us to maintain quality programs and services for the people we serve.

**Volunteer Requirements** - A caring heart, patience, compassion, and an interest in learning new things are requirements when working with our horses and students. Volunteers must be courteous and respectful, even in challenging circumstances. They must be alert to the unexpected, dependable, and consistent in attendance and performance. Anyone 14 years of age or older can volunteer. Individuals aged 12-13 may volunteer if accompanied by a parent or guardian who volunteers with them. All new volunteers must attend a scheduled orientation class, the dates for which are posted on our web site.

**Volunteer Opportunities** - Many volunteers help with our horses and support program participants in classes with such jobs as grooming and tacking the horses for class, leading horses during a lesson, or side-walking along with the rider. Volunteers also perform barn tasks including cleaning stalls, filling water buckets, turning horses out, and sweeping.

Other volunteer opportunities:

- Office work (filing, data entry, mailings)
- Special events
- Gardening
- Building and property maintenance
- Serving as Board members or on Board committees

To learn more about volunteering, contact our Volunteer Coordinator at (330) 935-2300 ext. 105.

# TESTIMONIALS

---

## Pegasus Farm has an amazing impact...

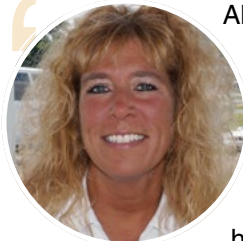
---

“Four years ago, my good friend Ann Becker asked me if I would be interested in volunteering at Pegasus Farm. This was the beginning of many happy Wednesday mornings, first helping in the garden and then with office duties. Pegasus Farm is one of the friendliest places you could spend time helping others. Ann and I leave every Wednesday saying, “What a nice morning we’ve had!””



- Pam Proctor  
(Pegasus Volunteer)

“Alex started riding at Pegasus at the age of three. He was diagnosed with severe autism and is visually impaired. Alex has made so many improvements in his seven years of riding – his vision, following directions, interacting with other children and expressing his feelings for the horses. My favorite improvement is watching Alex grow and discover more about what he can do and become more independent. My dreams for Alex become more realistic as I watch him change and grow every year with the program.”



- Beth Morehouse  
(Parent of Rider Alex Morehouse)

“I really like working with the staff in the garden and The Country Store. They keep me working and I like that.”

- Richard Motz  
(Participant, Wings Adult Day Services Program)



“Working with the horse at Pegasus, I have experienced the most significant therapeutic return. There seems to be an immediate application and identification of changes that need to happen in and by the program participant.”



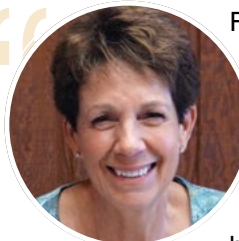
- Cathey Mitchell  
(PO with Stark County Family Court and Pegasus Corral Program-formerly with Quest Recovery Services)

“I believe all military veterans have emotional or visible wounds. I returned from Vietnam with no visible wounds. Volunteering at Pegasus with fellow veterans helps me deal with the emotional scars, through communication with the veterans and through grooming the horses. Memories you don't want to relive can be told to the horses.”



- Jerry Mong  
(Volunteer, Veterans Salute! Program)

“From tending flower beds in the summer to an ever-changing variety of office tasks after the gardens have been put to bed for the winter, my hours at the Farm are highlighted by the exceptionally dedicated and caring people I am lucky enough to spend time with each week. I feel blessed to be a part of the beautiful place that is Pegasus Farm.”



- Ann Becker  
(Pegasus Volunteer)



Publication design donated by Jesse Krakowski

